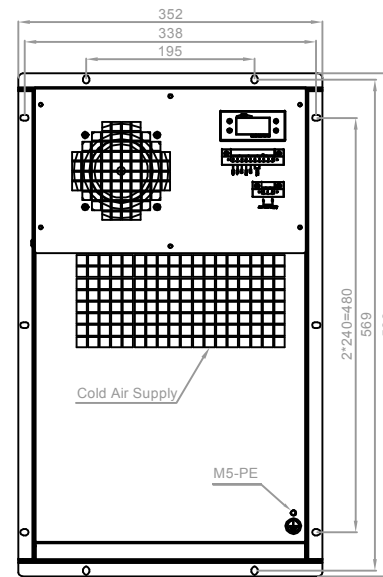
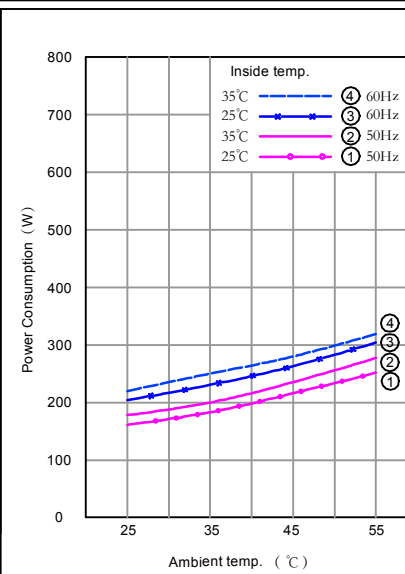
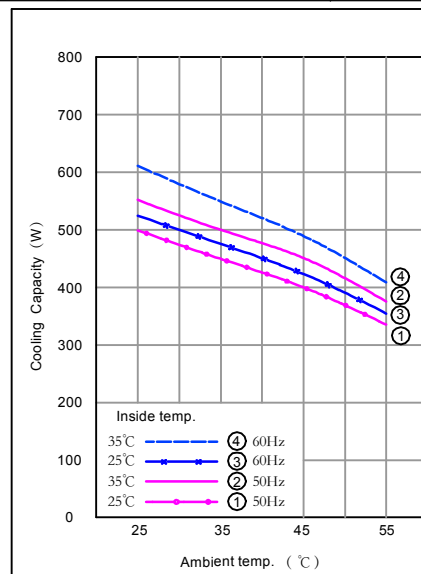


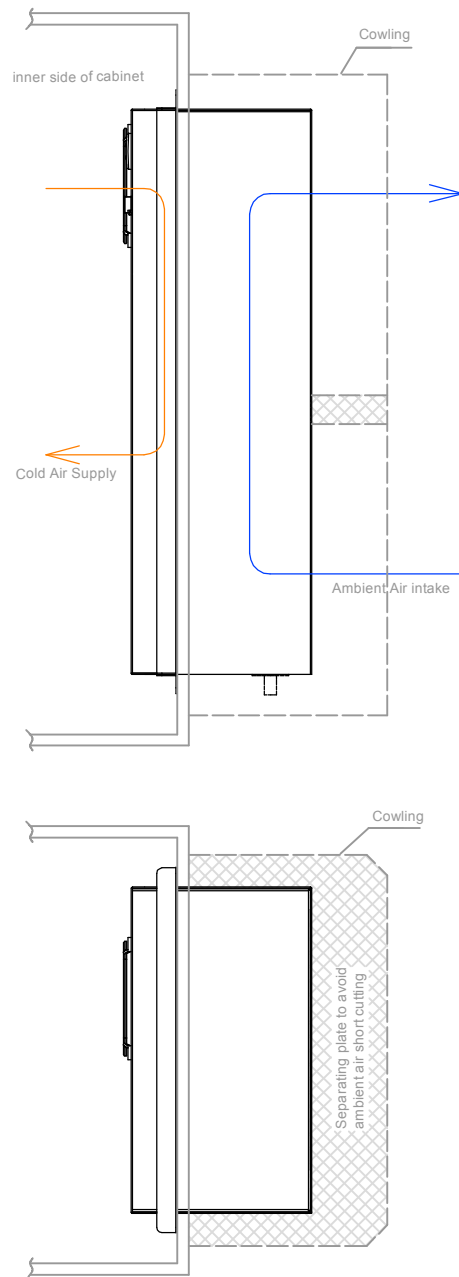
Technical drawing of a rectangular panel. The width is dimensioned as 315. There are two circular mounting points on the top edge. On the right side, there is a cluster of four small circles. Along the bottom edge, there are four small circles, with the outer two aligned with the panel's corners.

Technical drawing of a rectangular frame. The drawing shows a large rectangle with a smaller rectangle inside it, creating a border. The dimensions are labeled: 45 (width of the inner rectangle), 175 (width of the outer rectangle), and 546 (height of the outer rectangle).



Rated voltage	220-240V ~ 50 / 60Hz
Power supply range	196-265V ~ 50/60Hz
Cooling capacity	500 / 550W@ 35°C / 35°C
Rated power Consumption	200 / 250W @ 35°C / 35°C
Rated current	0.9 / 1.1A @ 35°C / 35°C
EER	2.5 / 2.2
Inner circulation air flow rate	150m ³ /h
Display	LED
Heater	500W (Option per order)
Operating temperature range	-15°C ~ +55°C
Max. noise level	65dB(A) @ 1.0m away
IP protection level	IP55 - between external and internal interface
Net weight	18Kg
Outer dimension	546x315x175 (mm,HxWxD)
Refrigerant type	R134a
Certification	CE
Surface treatment	Outdoor type powder coating, standard color: RAL7035
Lifetime	10 years

Figure 1 - Installation tips if extra cowling needed by customer

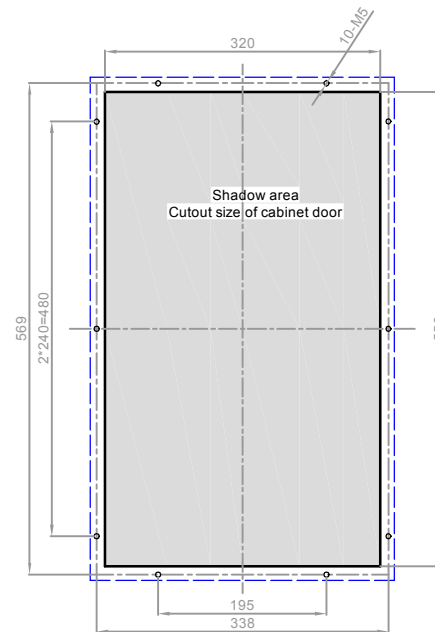


Note:
It is not recommended to add extra cowling

While if customer insist on doing that ,please follow below rules:

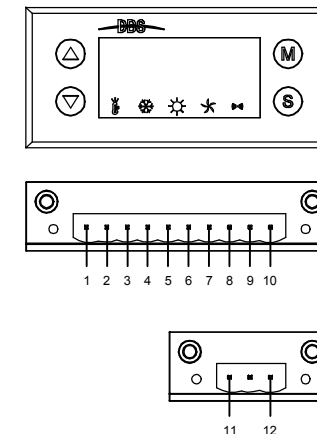
1. The louvers for ambient air intake and discharge must keep 70% above open area for having sufficient air flow
2. A separating plate must be added to avoid air short cut between intake & exhaust air

Figure 2 - Mounting interface with cabinet door



Blue dashed rectangle : Air conditioner projected dimension on door (583x352mm)

Figure 3 - Wiring interface with customer circuit



No.	symbol	Definition
1	T/R+	T/R+ port for RS485 communication
2	T/R-	T/R- port for RS485 communication
3	NC	Normally Closed port for alarming signal output
4	COM	Common Port for Alarming signal output
5	NO	Normally open port for alarming signal output
6	CONTROL	Control signal input : on / off dry switch type
7		
8	/	/
9	/	/
10	/	/
11	L	Pole : AC - L
12	N	Pole : AC - N

Display explanation :
LED will show inner air temp. at normal working,
while also show alarming code when alarming triggered.

Status bar : with indicator light

- Keep lighting when do parameter setting
- Keep blinking when unit carry out self testing process
- Keep lighting under normal cooling operation
- Keep lighting under normal heating operation
- Keep lighting when external cycle fan start working
- Keep blinking for alarming triggered